

Working Forest Conservation Easements and Wisconsin's Forest Legacy Program

Council on Forestry meeting
September 27, 2012

Nicole Potvin & Amy Singh



What we'll be covering

- ✓ Wisconsin's changing forest landscape
- ✓ How can easements help?
- ✓ What is an easement?
- ✓ How do easements affect ownership?
- ✓ Benefits of conservation easements
- ✓ Easements and timber harvests
- ✓ 2012 Forest Legacy Program accomplishments



Wisconsin's changing forest landscape

- ✓ Shrinking parcel size
- ✓ Decrease in forest industry ownership
- ✓ Increase in non-industrial private ownership
- ✓ Rapid property turnover

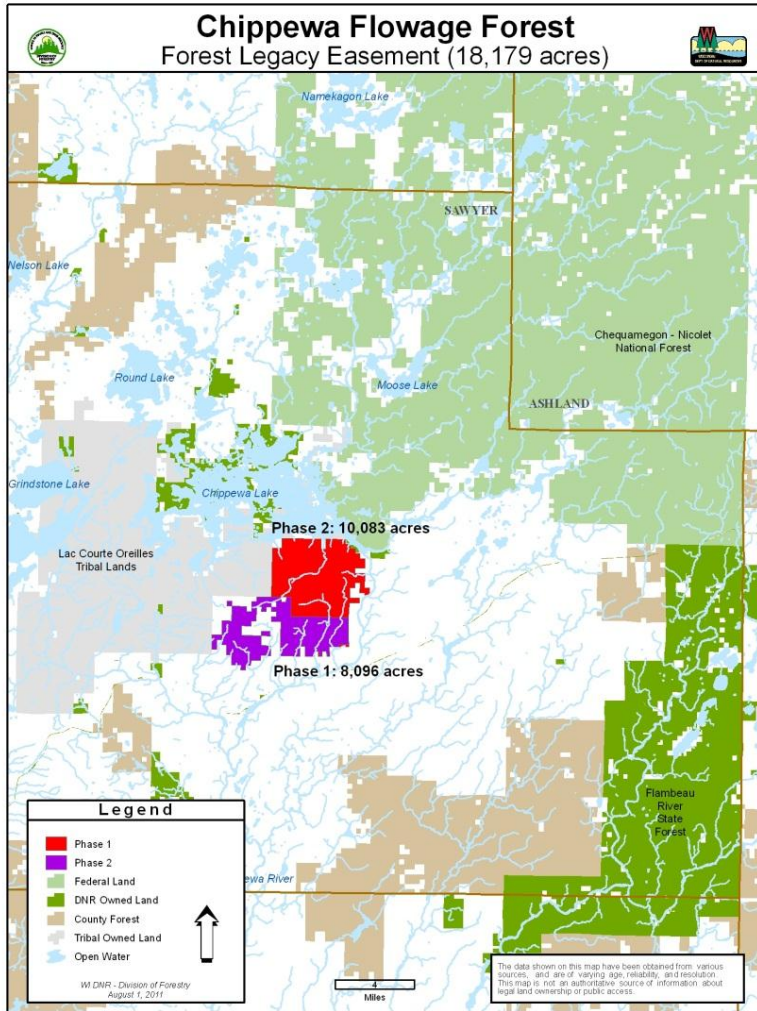


Wisconsin's changing forest landscape

Ownership size class (acres)	Owners (thousands)			Acres (thousands)		
	1997	2006	% Change	1997	2006	% Change
1-9	92	176	91.30%	339	529	56.05%
10-19	40	46	15.00%	518	575	11.00%
20-49	69	77	11.59%	2,157	2,204	2.18%
50-99	37	36	-2.70%	2,290	2,411	5.28%
100-199	17	19	11.76%	2,111	1,996	-5.45%
200-499	7	7	0.00%	1,569	1,496	-4.65%
500-999	1	1	0.00%	435	423	-2.76%
1,000-4,999	< 1	< 1	0.00%	316	304	-3.80%
5,000+	< 1	< 1	0.00%	1,077	810	-24.79%
Total	263	362	37.64%	10,812	10,749	-0.59%



How can easements help?



- ✓ Easements are one tool to keep forests as forests
- ✓ Easements focus on:
 - ✓ Reducing ownership parcelization
 - ✓ Reducing the rate of conversion of forest land
 - ✓ Conserving & protecting large, unfragmented blocks of forest land

What is an easement?

Conservation easements are **legally binding** agreements that transfer a purchased set of **negotiated** property rights from the landowner to the state without removing the property from **private ownership**. Easements run with the property deed **for perpetuity**.



How do easements affect ownership?

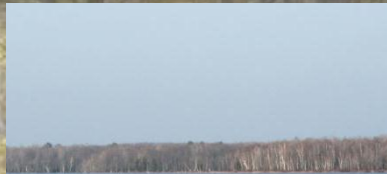
- ✓ Basic goals of easements:
 - ✓ Ensure sustainable forest management
 - ✓ Ensure public access
 - ✓ Limit development and subdivision
- ✓ Easements are not one-size-fits-all



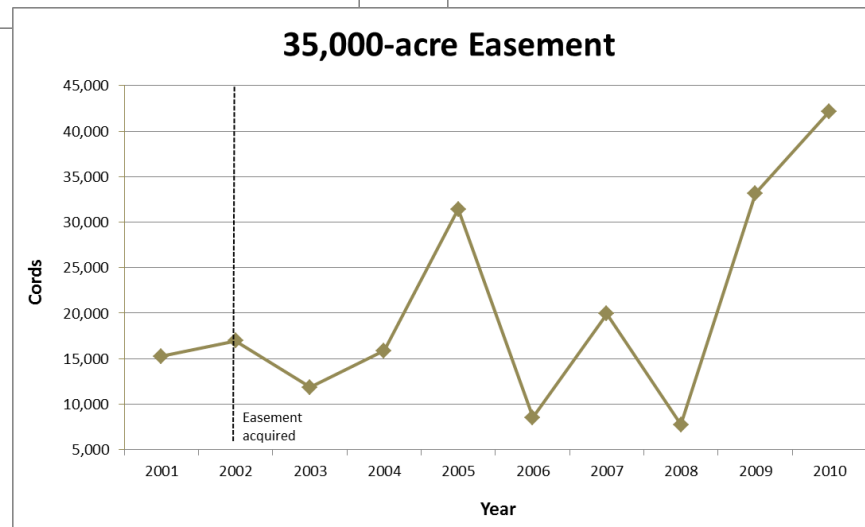
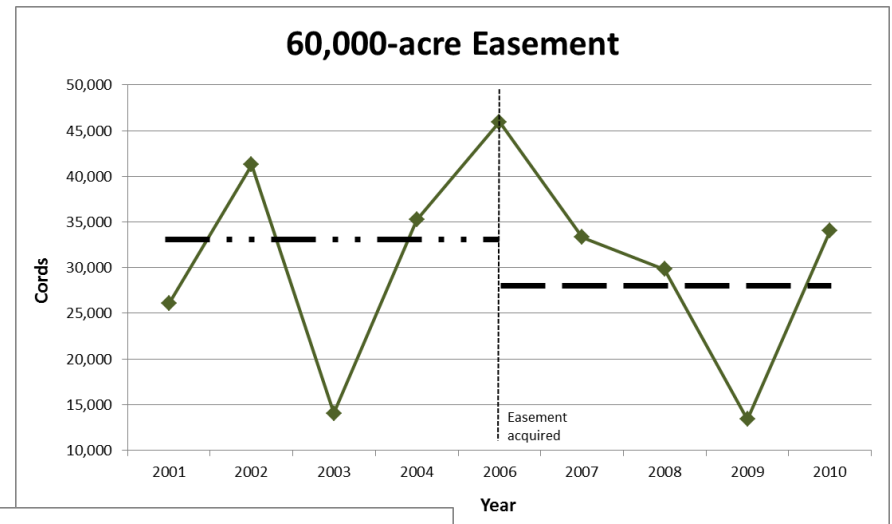
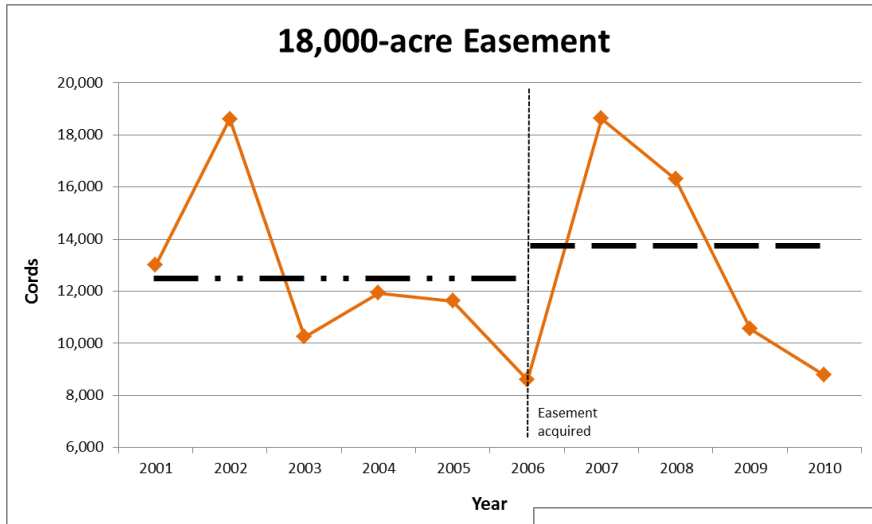
How do easements affect ownership?

	Managed Forest Law	Conservation Easements
Allow development	N	N
Allow management	Y	Y
Allow sale	Y	Y
Allow unlimited division	N	N
Ensure non-motorized access	Y (if open)	Y
Ensure motorized access	N	Y (if appropriate)
Term	25- or 50-year (unless withdrawn)	Permanently held by the state



Benefits of conservation easements: keeping forests as forests



Easements and timber harvests



Annual timber harvests from 2001-2010 on properties with working forest easements

 = pre-CE average annual harvest
 = post-CE average annual harvest



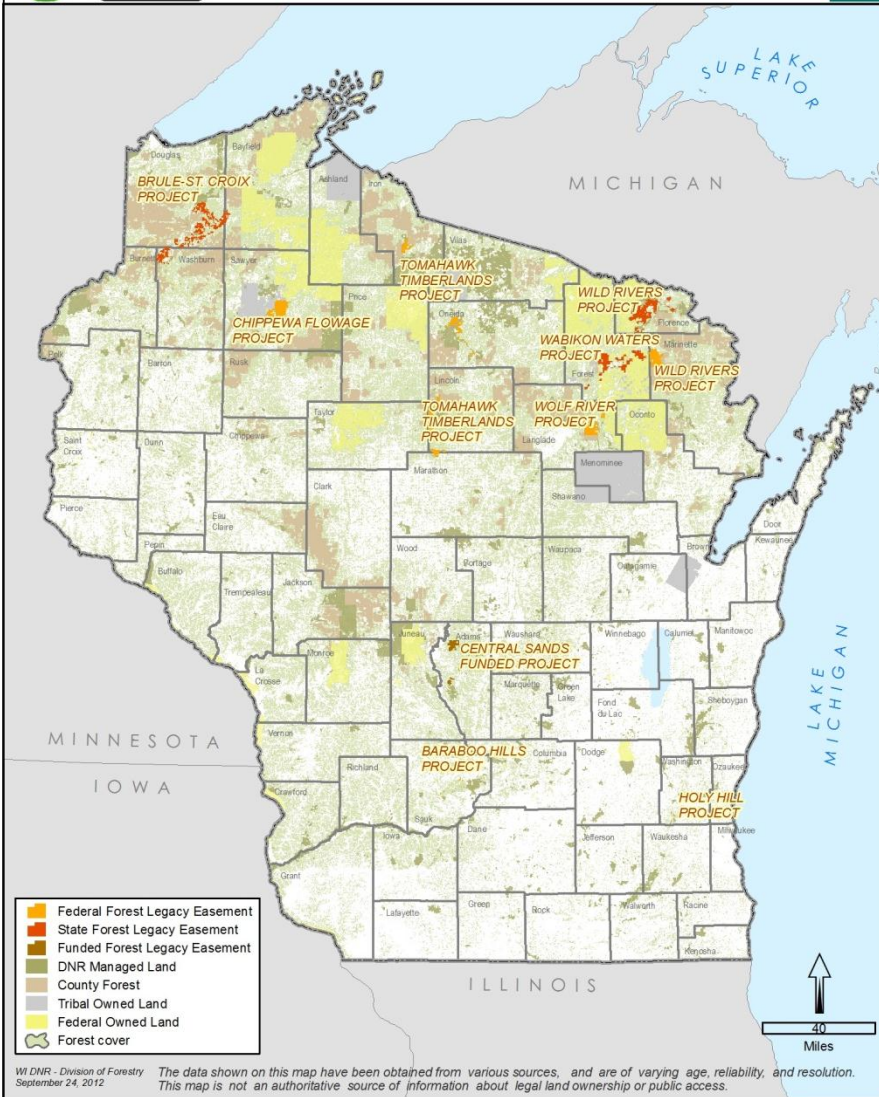
2012 Forest Legacy Program Accomplishments

Project Name	County	Funding Source	Acreage
Tomahawk Timberlands	Oneida, Marathon, Lincoln, Iron	State and Federal	35,337
Baraboo Hills	Sauk	State and Federal	925
Wolf River	Langlade	State and Federal	18,511
Wild River	Marinette, Forest	State and Federal	59,009
Holy Hill	Washington	State and Federal	199
Wabikon Waters & Woodlands	Forest	State	18,438
Chippewa Flowage Forest	Sawyer	State and Federal	18,179
Central Sands Pines (in progress)	Adams	State and Federal	9,048
Brule-St. Croix (in progress)	Douglas, Bayfield, Burnett, Washburn	State	67,347
TOTAL			227,083





Wisconsin Forest Legacy Program 2012 Accomplishments



WI DNR - Division of Forestry
September 24, 2012

The data shown on this map have been obtained from various sources, and are of varying age, reliability, and resolution. This map is not an authoritative source of information about legal land ownership or public access.



Questions?



Contact information

Nicole Potvin

Forest Legacy Program Coordinator

Nicole.potvin@wisconsin.gov

(608) 266-2388

Amy Singh

Amy.singh@wisconsin.gov

(608) 266-9805

